

P.L. 94-171 COUNTY BLOCK MAP (CENSUS 2000)

29 017843N
95 200032W
6642

29 017843N
95 124303W

GEOGRAPHIC AREAS LEGEND

| SYMBOL | NAME STYLE |
|--------|------------------------------|
| ***** | INTERNATIONAL |
| ***** | AIR (FEDERAL) |
| ***** | Trust Land |
| ////// | STATE |
| | COUNTY |
| ○○○○○ | CENSUS COUNTY DIV. |
| ■■■■■ | Incorporated Place |
| ■■■■■ | Census Designated Place |
| | Corporate Offset Boundary |
| ●●●●● | Voting District ¹ |
| ———— | Census Tract |
| ———— | BLOCK ² |

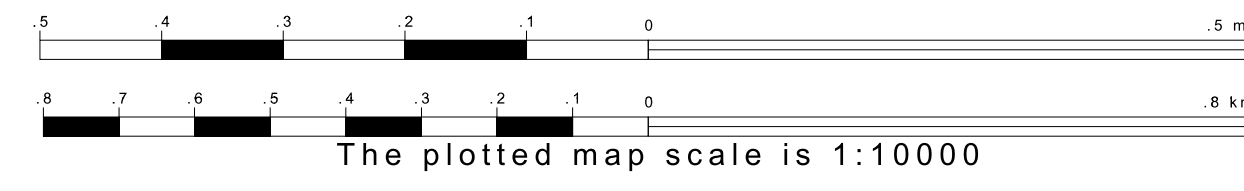
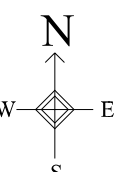
Military Inset Out Area

Abbreviation Reference: AIR = American Indian Reservation; Trust Land = Off-Reservation Trust Land
 1 A " " following a VTD code indicates an actual voting district. Its absence indicates that the VTD is a pseudo-voting district or no information is available as to its status.
 2 A " " following a block number indicates that the block number is repeated elsewhere on the block.

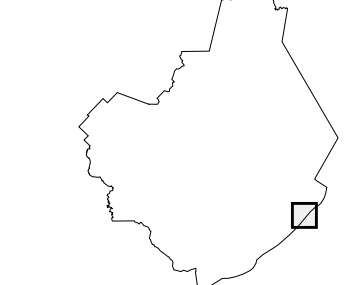
6642 BRAZOSPORT CCD 90415 38

28 951384N
95 200032W

28 951384N
95 124303W



Sheet Location within County



Key to Adjacent Sheets

| | | |
|----|----|----|
| 71 | 72 | 73 |
| 81 | 82 | |

ST: Texas (48)
COU: Brazoria (039)
SHEET 82 OF 92 PARENT SHEETS

All legal boundaries and names are as of January 1, 2000. The boundaries shown on this map are for Census Bureau statistical data collection and tabulation purposes only; their depiction and designation for statistical purposes does not constitute a determination of jurisdictional authority or rights of ownership or entitlement. U.S. DEPARTMENT OF COMMERCE Economics and Statistics Administration U.S. Census Bureau

